

# Chemray 330

## Automated Chemistry Analyzer



NEW



### Features

- Automatic, Random Access
- Constant speed 200 tests per hour
- Reagent pre-heating, liquid level detection
- Automatic 8 steps washing system, low carry-over
- 24 hours non-stop reagent cooling compartment
- Built-in barcode reader(optional)
- Clot detection function(optional)
- Reagent open system, close system on request
- User-friendly software based on windows operation system
- Labor saving, simple programming and real walk-away operation



For Medical Supplies  
01010060298 - 01210629090  
www.delta-care.com



الوكيل الوحيد  
بجمهورية مصر العربية  
شركة

# Chemray 330

## Automated Chemistry Analyzer



### Technical Specifications

#### System Function

- **Throughput:** Constant speed 200 tests/hour
- **Contents of the testing:** Clinical chemistry, Immunoturbidimetric
- **Analytical modes:** End-point, Two-point, Kinetic
- **Programming:** Open system with user defined programs
- **Automatic, Random Access**
- **STAT sample priority**
- **Bi-direction LIS interface**

#### Sample Tray

- **Sample positions:** 40 positions for samples
- **Sample volume:** 3~45μL, 0.1μL adjustable
- Random position for standard and quality control
- Built-in sample barcode reader(optional)

#### Reagent Tray

- **Reagent positions:** 40 positions in refrigerated compartment
- **Refrigerated temperature:** 4~15°C
- **Reagent volume:**
  - R1: 180~450μL, 0.5μL adjustable
  - R2: 10~250μL, 0.5μL adjustable
- Built-in reagent barcode reader(optional)

#### Reaction Tray

- **Reaction positions:** 81 cuvettes, 9 cuvette/strip
- **Reaction volume:** 120μL~500μL
- **Reaction temperature:** 37°C, fluctuation ±0.2°C
- **Independent mixing probe**
- **Cuvette washing:** Automatic 8 steps washing system

#### Probe

- Pre-heating for reagent
- Collision protection, Liquid level detection and Inventory checking
- Automatic inner and outer probe washing after every cycle, carry-over<1%
- Clot detection function(optional)

#### Measuring and Optic System

- **Lamp:** Halogen lamp
- **Absorbance range:** 0~4.000Abs
- **Wavelengths:** 8 wavelengths from 320nm to 850nm including 340nm, 405nm, 450nm, 510nm, 546nm, 578nm, 630nm, 670nm
- **Resolution:** 0.0001Abs

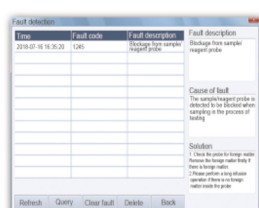
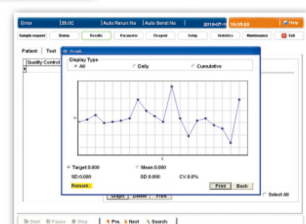
#### Working Condition

- **Power supply:** AC110V/220V, 50Hz/60Hz
- **Temperature:** 0~40°C
- **Humidity:** ≤80%
- **Water consumption:** ≤3.6L/h
- **Dimensions:** 800mm(L)×650mm(W)×590mm(H)
- **Gross weight:** 142kg

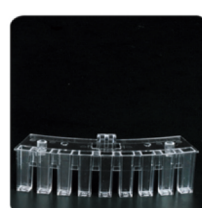
#### Status Menu



#### QC Graph



#### Clot detection function



#### Reusable cuvettes



#### High precision probe



#### 8 steps washing