

MANUFACTURE STANDARD, MANUFACTURE RELIANCE

# Chemray 240

Auto Chemistry Analyzer



NEW



## Features

- Automatic, Random Access
- Up to 160 tests per hour
- Reagent pre-heating, liquid level detection
- Automatic 8 steps washing system (optional), Low carry-over
- Labor saving, simple programming and real walk-away operation
- 24 hours non-stop reagent cooling compartment
- Reagent open system, close system on request
- Micro-volume for sample and reagent
- User-friendly software based on Windows Operation System



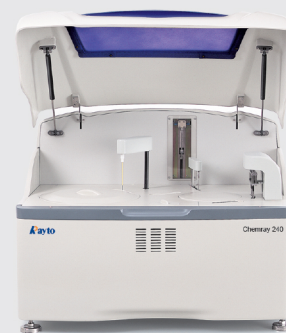
For Medical Supplies  
01010060298 - 01210629090  
[www.delta-care.com](http://www.delta-care.com)



الوكيل الوحيد  
بجمهورية مصر العربية  
شركة

# Chemray 240

## Auto Chemistry Analyzer



### Technical Specifications

#### System Function

- Throughput: Up to 160 tests per hour
- Contents of the testing: Clinical chemistry, Immunturbidimetric
- Analytical modes: End-point, Two-point, Kinetic
- Programming: Open system with user defined programs
- Automatic, Random Access
- STAT sample priority

#### Sample Tray

- Sample position: 40 positions for samples
- Sample volume: 3 ~ 100  $\mu$ L, 0.5  $\mu$ L adjustable
- Any position for standard and quality control setting

#### Reagent Tray

- Reagent position: 40 positions in refrigerated compartment
- Refrigerated temperature:  $\leq 16^{\circ}\text{C}$
- Reagent volume

R1: 180 ~ 450  $\mu$ L, 1  $\mu$ L adjustable

R2: 30 ~ 250  $\mu$ L, 1  $\mu$ L adjustable

#### Reaction Tray

- Reaction positions: 81 cuvettes, 9 cuvettes/strip
- Reaction volume: 180 ~ 500  $\mu$ L
- Reaction temperature:  $37^{\circ}\text{C}$ , fluctuation  $\pm 0.2^{\circ}\text{C}$
- Independent mixing probe
- Cuvette washing(optional): Automatic 8 steps washing system

#### Probe

- Pre-heating for reagent
- Collision protection, Liquid level detection and Inventory checking
- Automatic inner and outer probe washing after every cycle, carry-over  $\leq 2\%$

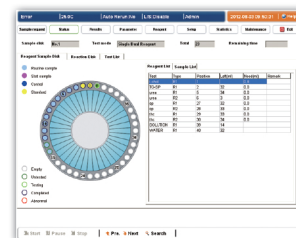
#### Measuring and Optic System

- Lamp: Halogen lamp
- Absorbance range: 0 ~ 3.500Abs $\pm 1\%$
- Wavelengths: 8 wavelengths from 320~850nm including 340nm, 405nm, 450nm, 510nm, 546nm, 578nm, 630nm, 670nm
- Resolution: 0.0001ABS

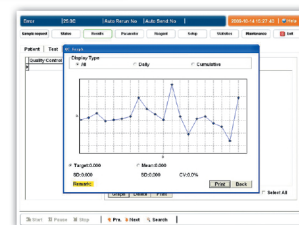
#### Working Condition

- Power supply: a.c. 110V/220V, 50Hz
- Temperature:  $0 \sim 40^{\circ}\text{C}$
- Humidity:  $\leq 80\%$
- Water consumption: Max 3 L/hour
- Dimensions: 810mm(L)\*680mm(W)\*1150mm(H)
- Gross weight: 145KG

#### Status Menu



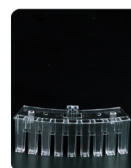
#### QC Graph



High precision probe



8 steps washing



Reusable/Disposable cuvettes



For Medical Supplies  
01010060298 - 01210629090  
www.delta-care.com



الوكيل الوحيد  
بجمهورية مصر العربية  
شركة