

Small. Powerful. The perfect fit.

High performance in an affordable, truly compact design

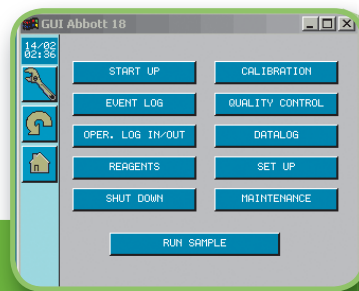
- Reliable and accurate patient results
- Standard barcode reader
- Multiple languages available
- Open-mode one touch operation
- Auto shutdown
- Quiet and lightweight

Fast and easy to use

- Results in less than 60 seconds
- Small sample size (9,8 μ L)
- Low reagent consumption
- Zero daily and weekly maintenance



CELL-DYN Emerald Specifications



Main Menu



Technology & Methods

- Electronic impedance
- Absorption spectrophotometry
- Electronic valves
- Cyanide-free lyse reagent
- LCD color touch screen
- RS232 and TCP/IP LIS interface
- USB ports

Throughput

- Up to 60 samples per hour

Sample Size

- 9.8 µL

Specimen Data Management

- Search by date or sequence number
- Flagging for patient limit sets
- Flagging for panic values
- 1,500 records with histograms on internal memory
- Up to 60,000 on external USB thumb drive
- Flagging for patient limit sets
- Programmable patient limits
- Programmable report units
- Standard barcode reader (reads code 128, code 39, and interleaved 2 of 5)

Quality Control

- 6 control files
- 100 runs per file
- Levey-Jennings graphs
- Upload/download control information
- eQC Online peer review program

Demographics

- Sequence number
- Alphanumeric specimen ID
- Alphanumeric patient ID
- Date & time analyzed
- Patient name
- CBC with 3-part differential
- Flagging and Alerts

Dispersional Data Alert

- Operator-defined patient limits for high and panic values
- System-defined limits for reportable range and analytical measurement range
- Suspect Measurand flags caused by interfering substances or sample abnormalities
- Suspect Measurand flags generated when WBC data indicates possible presence of an abnormal population

Standards & Safety Compliance

- UL61010A-1
- CE Mark
- CAN/CSA C22.2 No. 1010.1-92
- ETL Mark
- IEC 61000-3-2, 3-3, 4-2, 4-3, 4-4, 4-5, 4-6, 4-8, 4-11
- Harmonics emissions
- EN 55011 and EN 61000

Peripheral Devices

- Dot Matrix or Inkjet printer
- USB thumb drive
- Handheld barcode scanner

Physical Dimensions

- Height 13.8" (35 cm)
- Width 9.9" (25 cm)
- Depth 13.4" (35 cm)
- Weight 19.85lbs (9 kg) (without on board reagents)

Parameters

White Cells	Red Cells	Platelets
WBC	RBC	PLT
LYM #	HGB	MPV
LYM %	HCT	PDW*
MID #	MCV	PCT*
MID %	MCH	
GRAN #	MCHC	
GRAN %	RDW	

* Clinical significance has not been established for these measurands; therefore, they are not reportable in the U.S.

CELL-DYN Emerald Reagents

Reagent Description	Size	List Number
CN-Free Diff Lyse	960 mL	09H47-02
Diluent	10 L	09H48-02
Cleaner	960 mL	09H46-02

CELL-DYN Emerald Controls and Calibrators

Description	Size	List Number
CELL-DYN 16 Calibrator		99110-01
CELL-DYN 16 Normal Control	6 x 2.5 mL	02H40-01
CELL-DYN 16 Tri-Level Control	12 x 2.5 mL	99109-01
CELL-DYN 16 Tri-Level Control	6 x 2.5 mL	99105-01

Abbott GmbH & Co. KG
 Abbott Diagnostics Europe
 Max-Planck-Ring 2
 65205 Wiesbaden
 Tel. (+49) 61 22 58 0
 Fax (+49) 61 22 58 12 44
 www.abbottdiagnostics.com

